



# GLOBALECS®

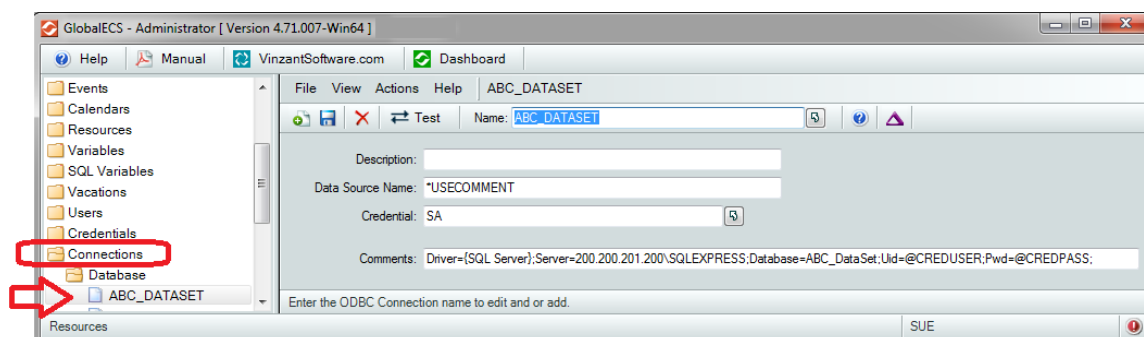
KNOWLEDGE BASE

## USING A CONNECTION STRING FOR YOUR SQL JOBS

GECS Database jobs use the concept of Connections to abstract the technical part of the connection between the agent and the database server.

ODBC Connections store the information that is necessary to connect to the ODBC data source and the Credential to use. ODBC connection information can be entered in the ODBC connection directly, using a connection string, without needing to create an ODBC DSN locally on each agent computer for SQL jobs or SQL Variables.

To use a connection string for your GECS SQL jobs, enter `*USECOMMENT` in the DSN Name field of the ODBC Connection and enter the ODBC Connection String in the Comment field.



The ODBC Connection Strings for different databases look different and contain different fields. ODBC Connection Strings typically look something like:

```
Driver={SQL Server};Server=myServer;Uid=username;Pwd=password;  
Database=myDatabase
```

or

```
Driver={Microsoft ODBC for Oracle};Server=myServerAddress;Uid=username;  
Pwd=password
```

Note that instead of specifying the username and password in the Connection String, you can enter the username and password in the `@CREDUSER` and `@CREDPASS` fields of the Credential rather than in the Username and Password fields and enter a Connection String that looks something like:



219.942.9544 [www.vinzantsoftware.com](http://www.vinzantsoftware.com)  
©2002-2019 Vinzant Software, Inc. All Rights Reserved. All company and product names are trademarks, or registered trademarks of their respective owners.

```
Driver={SQL Server};Server=myServer;Uid=@CREDUSER;Pwd=@CREDPASS;  
Database=myDatabase
```

and the substitution variables will be changed before the Connection String is used to connect to the ODBC data source.