



GLOBALECS®

KNOWLEDGE BASE

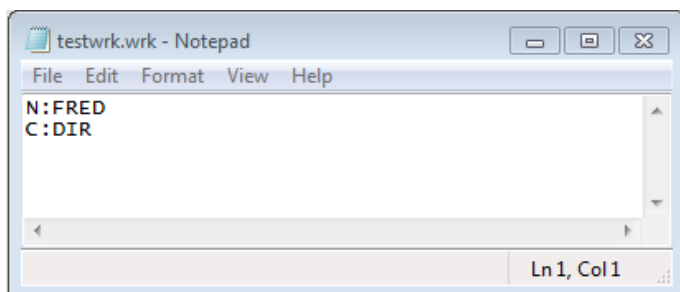
WRK FILES

WRK (pronounced work) files are one of the most powerful features of GECS. WRK files are used to add jobs or batch jobs to the GECS system without using the GECS Client programs. This is the easiest way to interface with GECS from other programs. WRK files are also used to transfer jobs from a test environment to a production environment.

GECS can be configured to look for these files. When it finds one, it reads it, validates it and creates a GECS job or batch based on it, just as if a user had manually created a job or batch using the Client programs.

For example, if you want users to easily submit a job that prints a report, you could write a program or batch file that simply creates the appropriate WRK file. GECS finds it, adds it as a job and then dispatches it to an Agent. The user wouldn't need to run GECS Client programs.

WRK files are simple to create. They are ASCII text files, the type created by programs like Notepad. Almost any language or 4GL tool can write an ASCII text file.

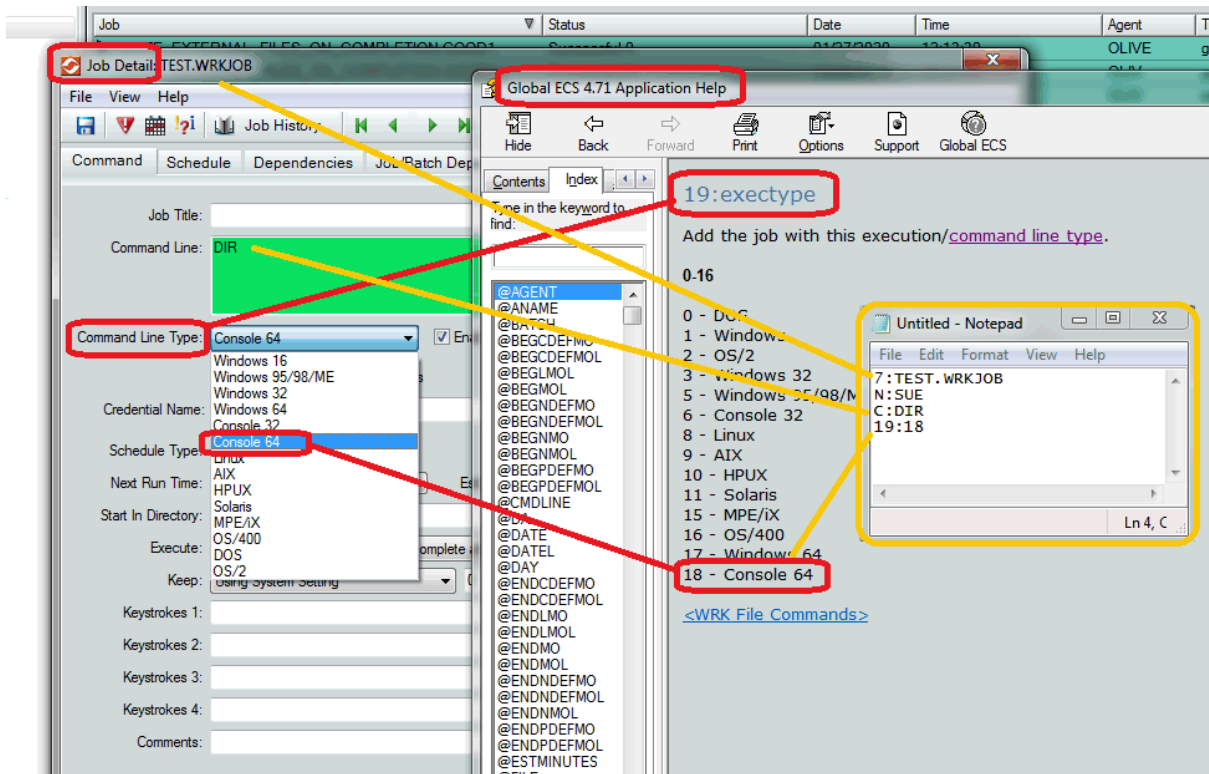


Every job parameter that you can enter in the Job or batch record screens can be included in your WRK file. If you press the <F1> function key while your cursor is positioned in any field in the job detail record, you will get an "Application Help File" that contains the WRK File equivalent parameter for each field. In this example, Notepad was used to enter a job name using 7; the user name using N; command line using C; and command line type using 19; parameters. The rest of the fields will contain default values.

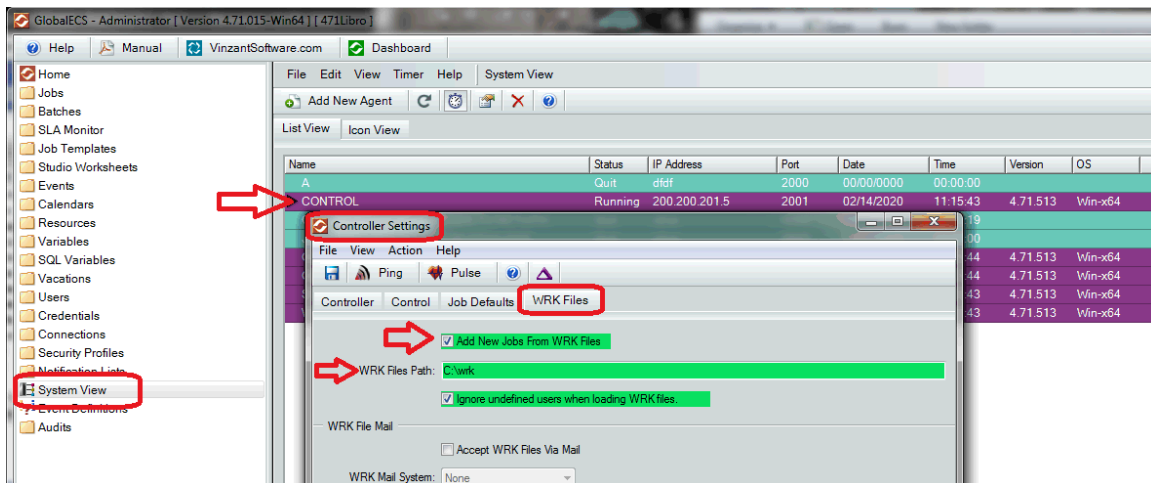
```
7:TEST.WRKJOB
N:SUE
C:DIR
19:18
```



219.942.9544 www.vinzantsoftware.com
©2002-2020 Vinzant Software, Inc. All Rights Reserved. All company and product names are trademarks, or registered trademarks of their respective owners.



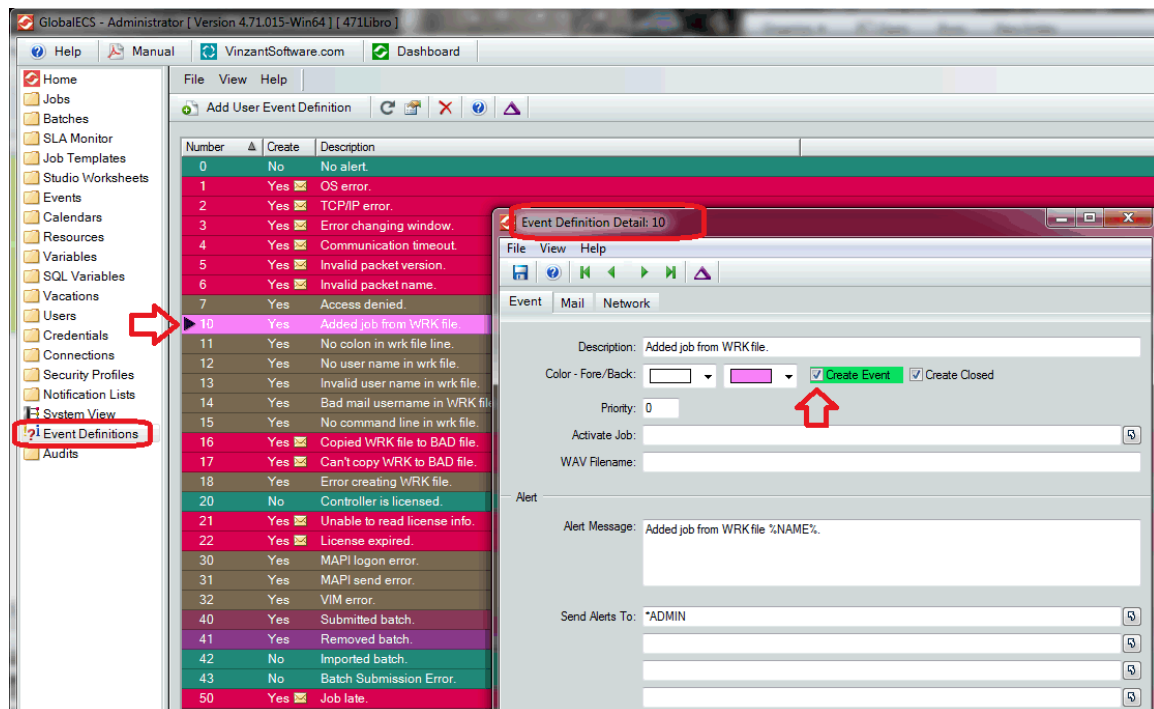
To configure the GECS system to look for and pickup wrk files you need to go to the "System View" module and update the Controller, CONTROL settings. Update the "WRK Files" tab. Enable the "Add New Jobs from WRK Files" and Update the "WRK Files Path" field as shown below.



You can create a simple WRK file similar to the four-line file created above named something like TEST.WRK.

Place the TEST.WRK into the WRK file path and the GECS system will pick up the WRK file, convert it into a job and delete the WRK text file.

You can turn on Event Notifications for when jobs are created from WRK files by updating your "Event Definitions" module, enable Event Definition #10 as shown below.



As GECS adds the WRK files as jobs, it validates the entries. Information you have left out of your WRK file is set to the defaults. Some of the defaults can be defined by you from the defaults tab in the (Controller) record. For the others the defaults are simple blanks or zeros.

Below is an example XML WRK file:

```
<?xml version="1.0" encoding="ISO-8859-1"?>
<!DOCTYPE gecsjobs [
<!ELEMENT gecsjobs (JOB*)>
<!ELEMENT JOB (cmdline, username)>
<!ELEMENT cmdline (#PCDATA)>
<!ELEMENT username (#PCDATA)>
]>
<gecsjobs>
<JOB>
<cmdline>DIR F:\*.*</cmdline>
<username>FRED</username>
</JOB>
```

```
</gecsjobs>
```

would cause the Global Event Control Server® to add a job submitted by user (N: or <username>) FRED and the command to execute (C: or <cmdline>) is DIR F:*. *. All WRK files must contain a name line (N: or <username>).

Commands for multiple jobs can be put in a single WRK file if you wish. The commands for the different jobs are separated by beginning the line with the pound sign (#) or by ending and restarting the <JOB> section. Additionally, you can put comments in the WRK file as well. Any line that begins with a semicolon (;) is considered a comment line. For example:

```
; the first job
C:COPY F:\X F:\Y
N:FRED
# ; the second job
C:DEL F:\X
N:FRED
```

or

```
<?xml version="1.0" encoding="ISO-8859-1"?>
<!DOCTYPE gecsjobs [
<!ELEMENT gecsjobs (JOB*)>
<!ELEMENT JOB (cmdline, username)>
<!ELEMENT cmdline (#PCDATA)>
<!ELEMENT username (#PCDATA)>
]>
<gecsjobs>
<JOB>
<cmdline>COPY F:\X F:\Y</cmdline>
<username>FRED</username>
</JOB>
<JOB>
<cmdline>DEL F:\X</cmdline>
<username>FRED</username>
</JOB>
</gecsjobs>
```

This WRK file would cause GECS to add two separate jobs to your jobs table.

To avoid accidentally loading XML files as WRK files, GECS will only load WRK files in the proprietary WRK file format by default. You must add a Registry entry to tell GECS to load XML format WRK files.

To enable XML files, go to the SYSMGR section of the GECS registry and add the WRKFileMode entry with a value of 7 to enable both the proprietary WRK file format and XML format. Add the WRKFileMode entry with a value of 0 to disable the proprietary WRK file format and enable the XML format. See the Registry Entries section of the Technical Reference chapter of the GECS online manual for more information. You can also change the file extension that GECS will use to determine XML format WRK files from the default of XML by adding the XMLExtension registry entry to the SYSMGR section. The 'field names' used in GECS XML files are the same as the SQL column names described in the File Glossary chapter.

Use the GECSBDUM and GECSDUMP command line utilities to export existing GECS jobs or batches into WRK files. See the Job Export Utilities in the GECS Command Line Utilities chapter of the GECS online manual for details.

